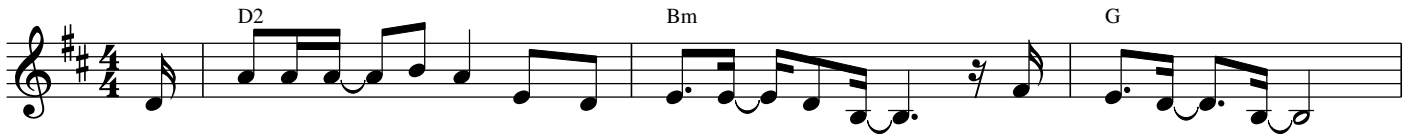


# Still I come

Liz Baddaley

♩=66



To day I come to you With more feel ings than faith But still I come,



still I come. To day I come to you my fear is loud er than my trust But I'm



still wel come Still wel come. Be cause of who you are Be cause of



your great love. Your strength is strong er than my weak ness Your



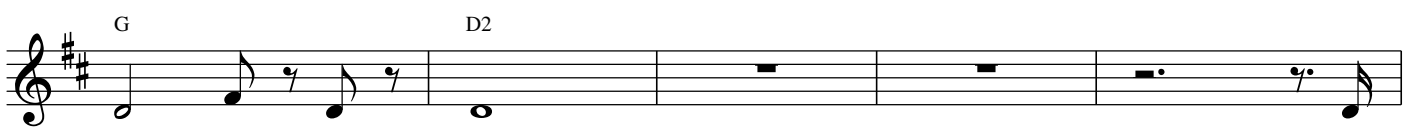
weak ness strong er than my strength Your love and mer cy are my hid ing place Your



good ness more than good e nough To co ver my not good e nough Your grace gen tly e ra ses all of my



shame Be cause of who you are Be cause of your great



love Still I come. To



day I come to you fee ling more an xious than cer tain But still I come, Je sus

Em7 D2 Bm

still I come To day I come to you feel ing more lost than found But I'm

G Em7 D/F# G D/F#

still wel come, yes I'm al ways wel come Be cause of who you are Be cause of

D2

your great love. Your strength is strong er than my weak ness Your

Bm G Em7

weak ness strong er than my strength Your love and mer cy are my hid ing place Your

D2 Bm G 3

good ness more than good e nough To co ver my not good e nough Your grace gen tly e ra ses all of my

Em7 D/F# G D/F#

shame Be cause of who you are Be cause of your great

G D2

love Still I come.